



**PARADISE**



**EVENTS & RENTALS  
AT**

**PARADISE**

THIS DOCUMENT IS FOR INFORMATION PURPOSES ONLY.  
PLEASE EMAIL [INFO@PARADISEONBLOOR.COM](mailto:INFO@PARADISEONBLOOR.COM)  
WITH ALL SPECIFIC INQUIRIES.

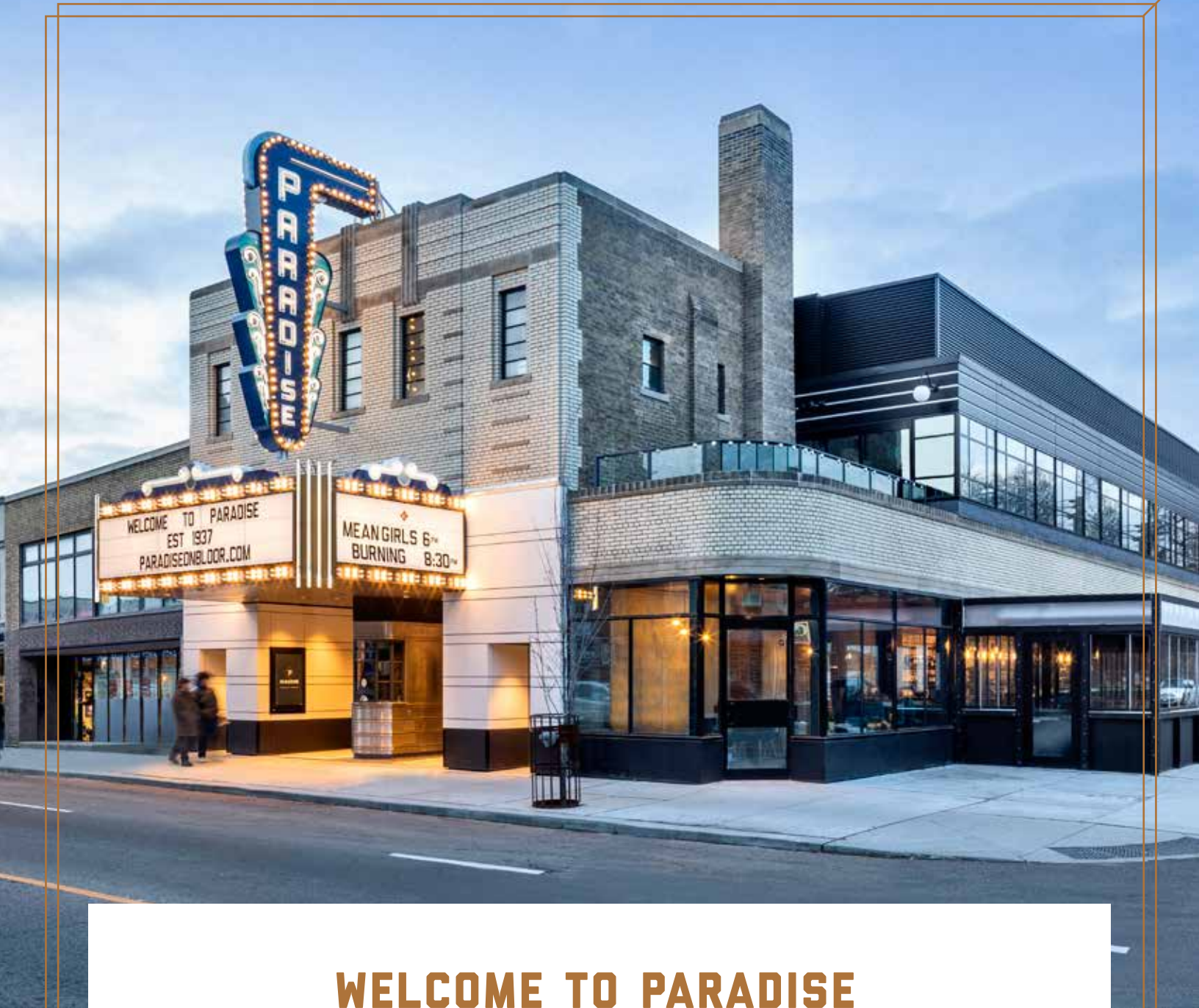
COME TO PARADISE  
EST 1937  
PARADISEONBLOOR.COM

PARADISE  
ONBLOOR  
.COM

# TABLE OF CONTENTS

---

WELCOME TO PARADISE	3
OUR SPACES	4
PARADISE THEATRE	5
OSTERIA RIALTO	14
PRIVATE DINING ROOM	17
BAR BILTMORE	19
HEALTH, SAFETY & WELL-BEING	21
DIVERSITY & ACCESSIBILITY	22
GENERAL INFORMATION	23
KEY FACTS	25
CAPACITIES	25
TECHNICAL SPECS	26
EQUIPMENT/INSTRUMENT RENTALS	27
STAGE, LOAD AREA & GREEN ROOM DETAILS	28
SAMPLE FEES & CHARGES	29
PARADISE THEATRE RATES	29
OSTERIA RIALTO RATES	29
PRIVATE DINING ROOM RATES	30
BAR BILTMORE RATES	30



## WELCOME TO PARADISE

**“[Paradise’s architects] have upgraded the 1937 building’s original Art Deco aesthetics to a style that is both elevated *and* comforting.”**

—THE GLOBE AND MAIL

Paradise—home to Osteria Rialto, Bar Biltmore and the iconic Paradise Theatre—is a unique and beautiful venue whose ambitious, energetic team prides itself on delivering events of all types and sizes to enviable perfection. With four bars, an onsite restaurant serving high quality Italian cuisine, and many links to the Toronto arts and music scenes, we are delighted to create bespoke events packages featuring entertainment, fine food and incredible service.

**When we say, “Welcome to Paradise”, it’s not just a greeting, but a promise.**



# OUR SPACES

## PARADISE THEATRE

With state-of-the-art technology facilitating both cinema and live performance, Paradise Theatre is the perfect venue to bring people together.

*Capacity: Up to 226 seated, up to 326 seated & standing combined.*



## OSTERIA RIALTO

Rent the restaurant for a big event, or gather a smaller group and enjoy our thoughtful, ingredient-focused Italian dishes.

*Capacity: Up to 83 in the restaurant (including our covered, heated, all-weather patio)*



## PRIVATE DINING ROOM

Our private dining room offers the most luxurious space to dine in the venue and is a perfect way to extend the experience of an evening's entertainment at Paradise Theatre.

*Capacity: Up to 12 guests seated.*



## BAR BILTMORE

An intimate second-floor space where spritzes, sours and negronis can be enjoyed alongside small bites and dishes from the raw bar.

*Capacity: Up to 50 guests standing without patio, up to 98 guests with patio.*



## EVERYTHING (OR MORE THAN ONE THING)

With internal doors connecting Paradise Theatre, Osteria Rialto and Bar Biltmore, a full Paradise takeover—or use of multiple spaces in combination—is a thrilling option for dining, dancing and drinking in sumptuous Art Deco-inspired surroundings.

*Capacity: various, depending on style of event, maximum capacity 653*



# PARADISE THEATRE

## ABOUT

**“The 1937 Art Deco gem has finally been resuscitated—and the end results eclipse even the building's original glory days.**

—SHARP MAGAZINE

Paradise Theatre is a Heritage-designated building dating back to 1937. Following a multi-year restoration and renovation project, Paradise is the ideal venue for live music performances and rehearsals, exclusive film screenings (including premieres and galas), discussion and talk events, AGMs, conferences, corporate away-days, product launches and all other live multimedia events. The Theatre can also be rented for filming and photography purposes.

Both cinema and live performance are serviced with leading audio-visual systems working cooperatively in the space. The venue's flexibility is aided by our innovative ground floor seating: the first five rows can be folded neatly into the floor.

The auditorium's balcony can be accessed from the lobby, directly from the Bloor Street West sidewalk or through a speakeasy-style door tucked into the wall of our slick cocktail bar, Bar Biltmore (more on that later!). Up in the balcony, guests can sip on freshly mixed drinks from the Balcony Bar while relaxing in plush leather couches. The sightlines of the stage and screen are excellent, the zinc-topped side tables are gorgeous and the washrooms are—arguably—the most beautiful in Toronto.

Events in Paradise Theatre presume use of the ground floor of the auditorium, the stage/screen and the green room. As required, renters may make use of the balcony seating area and/or the lobby, with beverage service from the Balcony Bar and/or the Lobby Bar added as desired.

Additionally, we are able to arrange catering, passed drinks & canape service, floral arrangements, food stations, moveable beverage carts, cruiser tables, venue security and additional customisable decor for additional fees.

Paradise Theatre can seat up to 222 guests total, or up to 312 with a mixture of standing and seated. Multiple seating arrangements are possible to best accommodate events of different sizes and styles.





## PARADISE THEATRE

### VENUE

---

**“Glimmering gold accents, scalloped bricks, and a catalogue of wall tiles so beautiful it has its own hashtag: #TilesOfParadise, harken back to the theatre’s Art Deco past with design that’s both old-timey and modern.”**

—BLOGTO

For all events at Paradise Theatre, the guest experience begins before arrival. Travelling east or west down Bloor Street West, our stunning, two-storey blade sign and traditional marquee (which can be personalised for your event) loudly announces the firm promise of elegance and glamour.

As guests move closer to the venue, they pass our Art Deco ticket booth—flanked by two fully customisable digital display screens—and walk through our striking, alloy steel double doors into the gorgeous lobby. Attendees are sure to feel transported to a bygone era as they grab a drink or a snack from the bar, before entering our stunning auditorium and taking in its unique, made-to-order leather seats and state-of-the-art audiovisual equipment.

A unique feature of Paradise Theatre is our versatile seating: the first five rows can be folded into the floor, allowing us to turn our fully-seated auditorium into a bustling dancefloor, or even a unique banquet hall!



## PARADISE THEATRE

### FOOD AND DRINK

---

**Paradise Theatre is a fully licensed establishment.**

Drinks from our talented bartending team can be served from each of our well-equipped Theatre bars, one in the lobby and one on the balcony. We are also able to provide moveable drink carts and/or foldaway tables to function as additional service bars on both floors of the auditorium.

For large events with a public audience, Paradise serves a curated selection of pre-made drinks including premium wines, bottled cocktails and canned beers and canned mixed-drinks. We are always happy to consider promotions and sponsorships from beverage producers. For more intimate or private events, we are able to produce bespoke beverage menus with experienced bartenders on hand to prepare and deliver exquisite made-to-order cocktails.

We are able to offer an array of pre-prepared and packaged snacks for guests to enjoy, and food stations, passed canapes and even banquets on the theatre's stage are possible with the cooperation of external suppliers and caterers.

Paradise also has access to a small, moveable popcorn cart which can produce limited amounts of fresh, traditional "cinema-style popcorn" on request.



## PARADISE THEATRE

### CATERING

---

External catering and food suppliers are always welcome in Paradise and **are required for all events requiring food service during the standard operating hours of Osteria Rialto**, unless the hirer is also using the restaurant or paying a fee for exclusive use of the restaurant kitchen. External caterers are also required for all events with more than 40 guests dining simultaneously.

Thanks to the extensive Green P parking lot to the rear of the venue, external caterers are able to create “pop-up” kitchens a few short steps from the venue.

For canapes and cold sharing platters, our go-to caterer is The Cheese Boutique. Sample menus can be found on their website: <https://www.cheeseboutique.com/catering/>

We currently have no preferred full dining caterers and are looking forward to the development of lasting commercial relationships with many of Toronto’s thriving caterers.

Please note that for all external caterers, we charge a 15% landmark fee on the final (pre-tax) cost.

Paradise can provide staff to assist with the plating of chilled or unheated food items produced by external kitchens, however, all equipment used for plating must be provided by the renter. We can assist with sourcing plating materials, rental cutlery and glassware, if required.

Please note that Renters may bring their own wine(s) for a \$40 per bottle corkage fee. Alternatively, our trained staff will be happy to consult on excellent in-house choices.





# PARADISE THEATRE

## STAFFING

Paradise provides venue management onsite during all operational hours. Paradise Management can be relied upon for site assistance and coordination.

Depending on the style of event and the number of guests, additional staff will be included as part of the rental agreement, and additional staff are available with costs ranging from \$25-50 per hour.

Paradise is able to provide skilled, trained staff to fill the following positions:

- ♦ Audio technicians
- ♦ Visual/Lighting technicians
- ♦ Additional Management
- ♦ Ushers
- ♦ Bartenders
- ♦ Sommeliers
- ♦ Servers
- ♦ Box office attendants
- ♦ Talent coordinators
- ♦ Guestlist concierge

Staffing requirements must be determined 7 days prior to the event to ensure staff can be scheduled and prepared for service. Paradise cannot guarantee additional day-of staff will be available and cannot guarantee an accommodation, if requested by the renter on the day of the event. If Paradise is able to accommodate and arrange staffing within 7 days of the event a premium upcharge of 25% will be carried to the labour balance.

Please note that all Audio/Visual technicians must be sourced by Paradise or the renter must submit an extensive insurance policy to mitigate the financial risk of equipment being damaged by users unfamiliar with the devices. If the Renter does not provide an insurance policy, Paradise can do so at a premium upcharge of 25%. The insurance policy will be provided to the Renter.

If preferred, renters are welcome to staff the venue using external staffing agencies. A landmark fee of 15% will be applied in this case.



## PARADISE THEATRE

### LOBBY

---

**“The results are right there in every detail and corner of the new Paradise. A gold-and-black concessions stand, its striped pattern inspired by old TTC streetcars, commands attention as soon as you walk through the building’s doors.”**

*—THE GLOBE AND MAIL*

The Paradise Theatre Lobby sets the refined mood of the venue with its antique brass details and sleek mirrored ceilings. The centrepiece island-style bar is a knowing nod to the history of the city – its unique design features brass tubing shaped to be reminiscent of traditional Toronto streetcars.

The Paradise Lobby can be used as a space to welcome or entertain guests before events in the auditorium, or as a unique setting in its own right for an early evening drinks reception. The lobby is a beautiful, memorable space for photoshoots and photo display, too. For live performances with a public audience, the lobby can also be used to set up merchandising tables for the sale of branded materials (e.g. clothing, records, posters, books). For corporate events, this space can also be used for signing in attendees and handing out welcome packs.

### CAPACITY

The Paradise Theatre lobby can comfortably accommodate 40-50 guests for a social gathering or drinks reception, and can hold up to 134 guests if used as a waiting room for audience members due to attend an imminent public performance in the auditorium.

Sample seating charts can be found here:  
[Paradise Sample Seating Chart](#)



# PARADISE THEATRE

## VENUE

---

### TICKET BOOTH

Paradise Theatre's historic ticket booth can be used for promotional purposes (eg branding, display of goods) or as a fun location for a greeter/guest concierge.

The ticket booth can be used for ticket sales in the event of a performance with a public audience that has not sold out in advance. Paradise can provide a member of staff to process ticket sales but the cost of labour and rental of payment processing technology will be charged to the renter. It is also possible to set up a table selling tickets within the lobby.

### BRANDING AND MERCH TABLES

Paradise has several fold-up tables that can be placed in the lobby. The lobby can comfortably hold two large tables along the east wall, as well as a table in the entryway of the auditorium.

For tables used for sales purposes, Paradise charges a flat fee and presumes all payment processing and cash handling will be completed by the renter. Paradise can source staff and equipment for an additional charge.

### MARKETING

The lobby boasts sufficient space to set up a branded background or other display boards, allowing for interviews, meet and greets and photo opportunities to amplify your brand and presence in the venue. We are also able to promote your event (if requested and given sufficient notice) through Paradise social media and marketing channels.



## PARADISE THEATRE

### GROUND FLOOR

The first five rows of our beautiful leather seats—produced by the world-leading [Figueras Group](#)—can be folded into the floor. This creates a space which can be used as a dancefloor, for a drinks reception with cruiser tables and passed hors d'oeuvres, or even for an exclusive private dining experience with up to 76 seated guests.

When used as an auditorium, Paradise Theatre has 182 standard seats on its ground floor and an accessible area for up to 4 people with assistive devices.

In addition to the flexibility afforded by our collapsible seating, we are also able to customise the ground floor through the use of mobile beverage carts and food stations as required. There is direct access from the auditorium to our Green Room, lobby, and the laneway at the rear of the building.





## PARADISE THEATRE

### BALCONY

**“The gloriously restored art deco venue at Bloor and Westmoreland, originally built in 1937, boasts a sleek upstairs cocktail bar that feels like the sort of fancy train car you’d flirt with Cary Grant inside (before he gets arrested on suspicion of murder in a Hitchcock movie) and a glistening golden lobby.”**

—CBC ARTS

The Paradise Theatre balcony offers a premium experience with plush seating, great sightlines, glamorous washroom facilities, a dedicated bar and exclusive access from Bloor Street West and/or Bar Biltmore.

The balcony features 22 custom leather couch-style “premium” seats with zinc-topped side tables and up to 12 stools adjacent to high-top tables and 6 stage-facing stools adjacent to the bar. With the removal of stools and high top tables, the standing room capacity for the balcony can be up to 82 (the 22 “premium seats” are stationary), including use of the two catwalks which offer incredible views of the stage.

**“The plush leather seats with built-in side tables in the balcony provide the ideal vantage point to appreciate the room’s bold black, grey and gold interior design, or whatever happens to be projected on the screen (or performed on the stage).”**

—THE GLOBE AND MAIL

Depending on the size, scale and style of the event, the Balcony Bar can provide beverage and pre-prepared snacks to suit any budget. The Balcony is a stunning, unique setting for drinks receptions with passed canapes, accompanied by music and visuals using the state-of-the-art Paradise Theatre sound system and our 4K Laser Barco digital cinema projector.



# OSTERIA RIALTO & PRIVATE DINING ROOM

Selected as one of Toronto Life's Best New Restaurants of 2020

---

Nominated for the Wine Spectator Award of Excellence

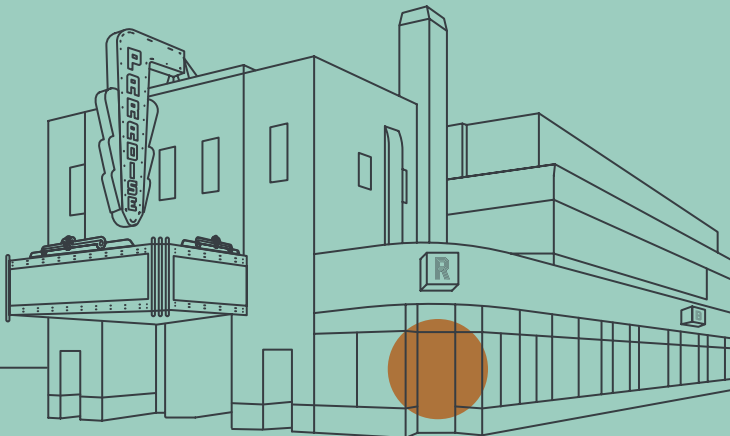
---

## THE RESTAURANT

Simply inspired by Italy, and an homage to its intimate, singular restaurants that invite any curious diner, Osteria Rialto brings a thoughtful and ingredient-focused dining experience to Bloorcourt.

The interior design of the restaurant mixes Art Deco accents with rustic wood features throughout. With custom wall treatments, hand-painted floor patterning and bespoke feature tiling, it's a refined yet casual space perfectly suited for enjoying rarefied versions of traditional Italian cooking.

Executive Chef Basilio Pesce brings culinary inspiration from all over the Italian peninsula, crafting a menu that echoes with recognisable flavours and ingredients, while taking care to use the freshest produce available. Start your evening with a vibrant cocktail before selecting a bottle from our captivating wine list, which offers broad appeal to all styles of wine lover through its fearlessness in drawing attention to the strengths of both traditional and experimental winemaking practices.





## OSTERIA RIALTO

### EVENTS

Our restaurant (including its patio and private dining room) is a stunning space which suits private events including celebrations, weddings, corporate dinners, as well as winemaker visits and wine-tasting events.

### RESTAURANT

Osteria Rialto is located on the ground floor of Paradise with access from our side door on Westmoreland Avenue or via Paradise Theatre's elegant lobby. Osteria Rialto features an exclusive booth at the north end of the space, with bank seating and moveable tables and chairs throughout. The patio boasts a retractable roof and plate glass windows that can be opened or closed, weather dependent. There is underfloor heating, as well as heaters behind the bank seating and in the roof structure, meaning the Rialto patio is warm and comfortable in all but the harshest conditions.

The total capacity of Osteria Rialto (including interior and patio) is 83.

Tables can be rearranged to suit your requirements, and a sample floor plan can be found here:

[Osteria Rialto Floor Plan](#)





## OSTERIA RIALTO

### MENUS

---

For private events of up to 40 in the restaurant, guests typically enjoy four or five course dinners served “family style” with sharing plates and cutlery. Our typical menus include bread and olives to start, followed by the traditional Italian antipasti, pasta, meat and dessert courses. In consultation with our chefs, guests can add or remove courses, or cater to dining preferences of all types. We are also able to accommodate modifications per dietary requirements.

For larger scale events, guests can add canapes and passed drinks service on arrival (with the options to host this part of the event in Bar Biltmore or the Paradise Theatre Lobby), and we can also produce bespoke beverage menus featuring wine pairings, as well as after-dinner liqueurs selected from our impressive range of Italian amaro.

*Sample, seasonal, menus can be provided on request.*

Sample menu: [Osteria Rialto Private Event Menu](#)





## PRIVATE DINING ROOM

### INTIMATE DINING EXPERIENCE

Osteria Rialto's Private Dining Room is a beautiful setting for any intimate celebration, located in our kitchen-adjacent wine cellar. One side of the room is decorated with exposed brick and antique cinema and wine-making equipment, while the other holds our temperature and humidity controlled Euro-Rack wine preservation display system, offering glimpses of cellared bottles of some of the world's most sought-after wines.

We guarantee your event's privacy thanks to an easily programmable numerical keypad lock on the Private Dining Room door, allowing easy entry and exit throughout your exclusive time in the space.

With direct access to the kitchen and dedicated, personal, servers, our private dining room offers the most luxurious space to dine in the venue and is a perfect way to extend the experience of an evening's entertainment at Paradise Theatre.



## PRIVATE DINING ROOM

### MENUS

---

For private events of up to 12, guests enjoying our private dining room typically enjoy four or five course dinners served “family style” with sharing plates and cutlery. Our typical menus include bread and olives to start, followed by the traditional Italian antipasti, pasta, meat and dessert courses. In consultation with our chefs, guests can add or remove courses, or cater to dining preferences of all types. We are also able to accommodate modifications per dietary requirements.

We can also produce bespoke beverage menus featuring wine pairings, as well as after-dinner liqueurs selected from our impressive range of Italian amaro.

*Sample, seasonal, menus can be provided on request.*

Sample menu: [Osteria Rialto Private Event Menu](#)

Floorplan: [Private Dining Room Floor Plan](#)



## BAR BILTMORE

Bar Biltmore is a stunning space, a narrow speakeasy-style bar accented with antique brass and Art Deco patterned tiles. Bespoke leather stools and cushions beside our wide windows offer luxuriant spots to sit, chat, drink and play.

The seasonal patio is a rare (for Toronto) second-floor outdoor balcony, overlooking Bloor Street West and our landmark Paradise sign. The views towards downtown and the crisp design are unparalleled, making this cocktail bar the perfect place for a drinks reception before dinner or a show, or an intimate setting for a raucous celebration lasting until the small hours.





## BAR BILTMORE

### SPACE

Bar Biltmore is located on the second floor (or first floor, depending on how you count) with access from our side door on Westmoreland Avenue or directly through a discreet door on the Paradise Theatre balcony.

Bar Biltmore and its seasonal patio can be combined to accommodate up to 98 guests, with the interior alone suitable for events with up to 50 people.

Tables can be rearranged to suit your requirements (fees may be incurred for furniture removal), and a sample floor menu can be found here:

[Bar Biltmore Sample Floor Plan](#)

### MENU

*Sample Menus on an event-by-event basis can be produced by our chefs with 48 hours notice.*

Sample: [Biltmore Sample Menu](#)



# HEALTH, SAFETY & WELL-BEING

---

Throughout the COVID-19 pandemic and beyond, we will continue to closely monitor industry-leading health and safety recommendations to ensure the safety of our teams, our community and our clients and guests.

## OUR HYGIENE & CLEANING STANDARDS

- All operational spaces in the venue are thoroughly sanitized and disinfected on a daily basis and throughout operating hours.
- Other 'high touch' areas are monitored and sanitized every 30 minutes.
- All tables and chairs are wiped down between uses with antibacterial disinfectant.
- All staff wear protective face masks while working.
- Hand sanitizer stations are available throughout the venue for guests to use.

## PREVENTION & PHYSICAL DISTANCING MEASURES

- Entry-monitoring of all guests and staff to ensure only those who are symptom-free may enter the venue.
- Contact tracing of all guests and staff, noting times of entry and exit.
- Our staff maintain social distancing within the workplace whenever possible and firmly encourage guests to do the same.
- Floor markers and signage assist in maintaining directional flow of foot traffic and appropriate physical distancing.
- We continue to monitor directives issued by Public Health Ontario and Toronto Public Health, revising our operating procedures as and when necessary to ensure full compliance.

# DIVERSITY & ACCESSIBILITY

---

## DIVERSITY

Paradise is committed to inclusivity and diversity and as such continues to work towards equity of opportunity and experience in its employment practices and provides regular, mandatory, training to all staff in decision-making roles. Paradise understands that improvements in this regard can—and must—always be made.

## ACCESSIBILITY

In partnership with the Canadian National Institute for the Blind, Paradise is proud to be fully sight accessible through use of Beacons, QR codes and braille.

Paradise has a wheelchair accessible washroom, wheelchair accessible spaces in the auditorium, and a wheelchair lift from stage to street level, providing full accessibility for performers and speakers. Osteria Rialto and the Paradise Theatre Lobby are both fully wheelchair accessible, however there is no elevator onsite, which unfortunately means there is no wheelchair access to Bar Biltmore or the Paradise Theatre balcony.

For more information and photography, please visit <https://paradiseonbloor.com/about/accessibility>

# GENERAL INFORMATION

---

## DEPOSITS

Paradise charges a standard 50% deposit at time of booking to confirm the event or reservation. This deposit will be applied to final balance at time of event.

In some circumstances, Paradise may charge an additional, refundable, 10% deposit which will be retained by Paradise in the event of breach of contract (for example, in the event that stringent public health measures are in place, which the renter failing to adhere to could cause lasting reputational, financial and/or operational damage to Paradise. If a renter's misbehaviour causes fines or closure levied towards Paradise, full financial redress will be sought with no upper limit.)

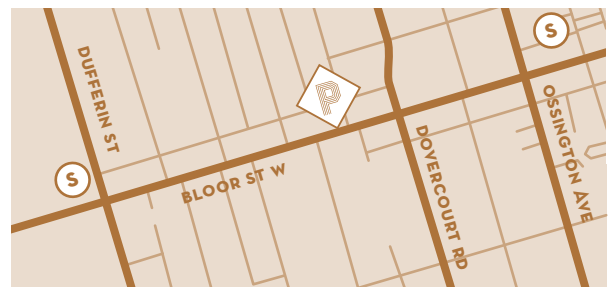
## TICKETING

Paradise does not provide ticketing services, though we are happy to recommend external ticketing partners we have worked with in the past.

## EVENT MARKETING

Unless requested otherwise, for all public events with a paying audience, Paradise will post about the event on our website and social media platforms, as well as in our monthly newsletter and on our exterior digital display screens. For us to be able to do this without incurring costs beyond the standard rental fee, we require marketing materials and links to your ticketing site no later than five weeks (35 days) before your event.

We are also able to advertise your event on our Bloor St W marquee, or provide you with the opportunity to use the marquee for a marketing photoshoot. Please reach out to us directly to discuss availability and any potential fees.



## GETTING HERE

Paradise is located between the accessible Dufferin Street and Ossington Street subway stations, as well as bus stops servicing Dufferin Street and Dovercourt Road.

Green P parking (Carpark 84) is available directly behind the theatre, just north of Bloor St W.

Bike parking is widely available in the neighbourhood.

If you are arriving by taxi or other private hire vehicle, please direct your driver to the corner of Westmoreland Avenue and Bloor St W, as the Bloor Street cyclepath prevents parking directly in front of our entrance.

Talent or VIP guests who wish to enter discreetly can be welcomed by our staff in the laneway at the reverse of the building. This is also the drop-off location for deliveries of equipment, props, musical instruments and other stage furniture.

# GENERAL INFORMATION

---

## CHARITABLE DONATIONS

As a landmark building and business in the Bloorcourt neighbourhood, we are proud to support local charities Sistering and Oasis Dufferin Community Centre (our local food bank). We add a discretionary \$100 charitable donation to the final total of all rental fees, to be split 50/50 between these organizations. We also encourage donations in kind, e.g. unspoilable food items, sealed hygiene products and warm clothing.

<https://oasisdufferin.org/>

<https://sistering.org/>

## SECURITY PERSONNEL

Paradise does not provide Security Personnel during standard operating hours. If your event should require this, we request the renter make these arrangements with sufficient notice. We are happy to provide contact information for Security companies hired for previous events at Paradise.

## ARCHITECTURE & INTERIOR DESIGN

The stunning restoration and renovation of the Heritage-designated Paradise has been widely praised by Torontonians and visitors alike, winning a prestigious Peter Stokes Restoration Award from the Architectural Conservancy of Ontario. Our “blade” sign and marquee were also featured in the album art for Juno Award-nominated musician Frank Walker’s single ‘Kiss Me’.

**Heritage Architect:** [ERA](#)

**Architect:** [Ware Malcomb](#)

**Interior Design:** [Solid Design Creative](#)



# KEY FACTS

## CAPACITIES

Space	Max Seated	Max Standing & Seated	50% Max Seated*
<a href="#">Paradise Theatre Lobby</a>	n/a	134	n/a
<a href="#">Paradise Theatre Ground Floor THEATRE</a>	186	222	93
<a href="#">Paradise Theatre Ground Floor BANQUET</a>	76	n/a	38
<a href="#">Paradise Theatre Balcony</a>	40	104	20
<a href="#">Osteria Rialto Interior</a>	20	50	10
<a href="#">Osteria Rialto Patio</a>	16	48	8
<a href="#">Private Dining Room</a>	30	30	15
<a href="#">Bar Biltmore Interior</a>	53	53	27
<a href="#">Bar Biltmore Patio</a>	12	12	6
<a href="#">Entire Paradise Complex (without sit down dinner)</a>	n/a	653	n/a
<a href="#">Entire Paradise Complex (with sit down dinner)</a>	159	n/a	n/a

\*Socially distanced

# KEY FACTS

---

## PARADISE THEATRE TECHNICAL SPECS

### Screening a movie or hosting a live performance? Why not both?

Paradise's state-of-the-art auditorium has two retractable screens, two cutting-edge sound systems for cinema and live performance, fully automated lighting and "no-nonsense" Lutron controls.

The auditorium seating arrangement is also flexible to accommodate different types of crowds.

### Screens and Projector

- ♦ Retractable cinema screen (image size: 20' 9" w x 11' 2" h) with adjustable sides and top masking. This screen is located at the front of the stage and is suitable for screening only.
- ♦ Retractable lecture screen (image size: 16' w x 9' h). This screen is located 12.5 ft from the front of the stage and is suitable for any events with live performers/speakers and simultaneous projection.
- ♦ 4K Smart Laser Barco DP4K-17BLP digital cinema projector, able to show most digital film formats and all formats following conversion.

### Sound

- ♦ Cinema Sound System: 7.1 surround sound compatible with 5.1 and stereo sound
- ♦ Live Sound System: d&b audiotechnik system with Yamaha CL1 console
- ♦ 2 x 24S LR up speaker
- ♦ 2 x 24SD LR Down speaker
- ♦ 2 x B22-SUB high performance subwoofer
- ♦ 3 x 8S Front fill speaker
- ♦ 4 x M6 2-way high performance stage monitor
- ♦ 3 x 3OD Amplifier
- ♦ 1 x 1OD Amplifier
- ♦ Shure Microphones: 2 handheld, 2 lapel clip

### Lighting

- ♦ 14 x ETC ColorSource LED Spotlights
- ♦ 14 x ETC 436EDLT colour source spot with 36 degree lens
- ♦ 12 x ETC ColorSource Par DB LED Fixture Wash
- ♦ 4 x Chauvet Maverick MK1 SPOT LED Spot fixture
- ♦ 6 x Chauvet Rouge R2 Wash LED moving wash

### Hearing assist and audio description devices

- ♦ 4 x Sennheiser HDE2020-D Stethoset receiver
- ♦ 4 x Sennheiser EK2020-D Beltpack receiver

# KEY FACTS

---

## EQUIPMENT/INSTRUMENT RENTALS

Our Bloorcourt neighbours Long & McQuade have been partners to us since the birth of Paradise, and we are happy to recommend their business as a premium provider of audio and musical equipment rentals.

Please note that Paradise does not manage equipment use and hire and all rentals from Long & McQuade must be facilitated by the renter of the venue. In most circumstances (i.e. the renter has hired Paradise for a full-day and there is no early morning event the following day), it is possible to safely store rental equipment in the Paradise auditorium from 12pm of the day of the event until 12pm the following day. This service is provided as a courtesy to help ensure safe return or pickup of equipment and—when possible—collection the same day as the event is preferred.

Long & McQuade strives to provide premium equipment that can satisfy almost any programming feature or event type.

Rentable materials include, and are not limited to:

- ♦ Microphones
- ♦ Amplifiers
- ♦ Wind and String Instruments
- ♦ Audio Cords
- ♦ Recording Equipment
- ♦ Drum, Acoustic and Keyboard equipment
- ♦ Plexi-Glass Barriers\*
- ♦ Mobility Equipments (stands and cases for instruments)

Please note that Paradise receives no commission from Long & McQuade and nor do we prohibit the use of alternative audio equipment rental services. Rental rates and terms are a matter between the renter and Long & McQuade only.

[www.long-mcquade.com](http://www.long-mcquade.com)

\*subject to availability

# KEY FACTS

---

## STAGE, LOAD AREA & GREEN ROOM DETAILS

### Stage dimensions

Please note that the stage does not have a backstage area, nor wings:

- ◆ Stage width at front of stage: 21.9 ft
- ◆ Stage width at centre of stage: 17.8 ft
- ◆ Stage width from back of stage: 20.7 ft
- ◆ Stage height: 3.5 ft
- ◆ Stage depth from back curtain: 13.5 ft
- ◆ Stage depth from front of stage to very back wall: 16.7 ft
- ◆ Width of stairs on both sides of stage: 3.4 ft

### Stage furniture

#### Paradise Theatre Stage Furniture

- ◆ Stanley Armchair x5
- ◆ Side Table x5
- ◆ Coffee Table x1
- ◆ Adjustable Stool x5
- ◆ Charcoal Grey Rug (8'6" x 11'6") x1

### Load area

- ◆ Equipment to be loaded in through the back doors, accessible from the laneway off Westmoreland Ave
- ◆ There is a lift available for transporting heavy equipment onto the stage
- ◆ Loading door: 56" w x 89" h

### Green Room

- ◆ Capacity: 6 seated persons or 8 standing persons
- ◆ Seating
- ◆ Desk
- ◆ Fridge
- ◆ Mirror
- ◆ Private washroom with a shower & two bath towels
- ◆ Catered food & beverage can be provided if ordered 72 hours in advance.

# KEY FACTS

## SAMPLE FEES

### Paradise Theatre Rates

(Max 326ppl–Seated and Standing)

Please note: These are general rates meant to set expectations, they will change based on the particulars of your event, the frequency, and the restrictions on date and time as well as your past relationship with Paradise. These rates include all FOH staffing as required and one AV technician.

Please enquire directly via [info@paradiseonbloor.com](mailto:info@paradiseonbloor.com) for a bespoke quote tailored to your event.

Session Rate	Half Day 5-7 hours includes load-in /load-out	Full Day 12-14 hours includes load-in /load-out
Monday	\$3,000	\$5,000
Tuesday	\$3,000	\$5,000
Wednesday	\$3,000	\$5,000
Thursday	\$3,000	\$5,000
Friday	\$3,000	\$5,000
Saturday	\$3,000	\$5,000
Sunday	\$3,000	\$5,000

These rates are presumptive on an average base rate based on labour used as well as average expected occupancy.

### Osteria Rialto Rates

(Max 83ppl–Seated)

Please note: These are general rates meant to set expectations, they will change based on the event and will have restrictions on date and time.

10am–4pm \$150 per hour  
(no food service, no bar service)

10am–4pm \$200 per hour  
(no food service, coffee/bar service–inclusive of one dedicated service team member)

6pm–12am \$3,000\*  
Indoor Dining Room Only (Considered a Food and Beverage minimum expenditure, inclusive of staffing)

6pm–12am \$6,000\*  
Patio Use Only (Considered a Food and Beverage minimum expenditure, inclusive of staffing)

6pm–12am \$9,000\*  
Patio and Indoor Dining Room (Considered a Food and Beverage minimum expenditure, inclusive of staffing)

\*Rental rates include staffing. All food and beverage will be charged by consumption.

# KEY FACTS

---

## Private Dining Room Rates

(Max 12ppl–Seated)

**Please note: Dates are subject to availability.**

Monday, Tuesday, Wednesday, Sunday evenings  
\$600 minimum expenditure, before tax  
and gratuity

Thursday, Friday, Saturday evenings  
\$900 minimum expenditure, before tax  
and gratuity

## Bar Biltmore Rates

(Max 98ppl–Standing)

**Please note: These are general rates meant to set expectations, they will change based on the event and will have restrictions on date and time.**

10am–4pm     \$150 per hour  
(no food service, no bar service)

10am–4pm     \$200 per hour  
(no food service, coffee/bar service–inclusive  
of one dedicated service team member)

6pm–12am     \$6,000\* Indoor & Patio Use  
(Considered a Food and Beverage minimum  
expenditure, inclusive of staffing)

Rental rates include staffing. All food  
and beverage will be charged based  
on consumption.



PARADISE



THANK  
YOU

THANK YOU FOR YOUR INTEREST IN PARADISE!

PLEASE REACH OUT TO:

[INFO@PARADISEONBLOOR.COM](mailto:INFO@PARADISEONBLOOR.COM)

WITH ANY QUESTIONS OR REQUESTS FOR  
ADDITIONAL INFORMATION.

WE LOOK FORWARD TO SEEING YOU SOON!